

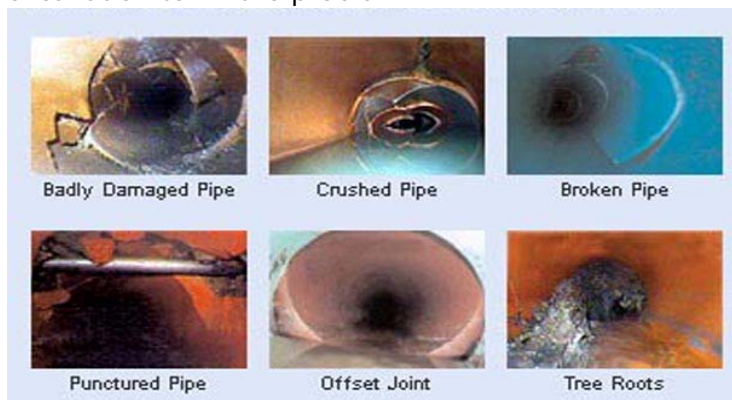
## SEWER LINE VIDEO SCOPE

Very few property owners or home buyers are aware that they are responsible for the sewer line (sewer lateral) from the building to the city main. Broken, flat, bellied, offset, or root-infested sewer lines can cause sewage to back up into the house or commercial building leading to extensive property damage in the home or business. Sewer back-ups can cause thousands of dollars in property damage and loss of valuable operating time for businesses.

Standard home inspections do not cover the structural integrity or condition of sewer or septic lines. Having a sewer or septic line inspection prior to purchasing a property is a proactive approach to make an educated buying decision, plan for upcoming maintenance, budget for necessary repairs, or gain valuable purchase price negotiation. The time to find out if a sewer is faulty or needs replacement is *before* buying a home, not after the fact.

### Reasons to Inspect the Sewer Line

- Tree roots growing into sewer lines is a common problem. Roots crawl into tiny openings and expand in the sewer line, latching on to other debris that typically cause backups such as grease or eggshell waste. Sometimes chemicals can kill the tree's roots, but if the roots reappear, the pipe may be damaged and require excavation to fix the problem.



- Homes that were constructed prior to city sewers often relied on cesspools. After cities installed public septic systems, sometimes the cesspools were left intact and connected to the sewer line. You won't know unless you inspect the sewer.
- Many homes built in the 1950s have sewer lines made from tar paper called Orangeburg pipes. These disintegrate and collapse over time. If a home has Orangeburg, the sewer line definitely needs to be replaced.





## **How to Inspect a Sewer Line**



A small video camera attached to the end of a flexible cable is inserted into the clean-out inside or near the house. The camera is fed through the sewer line until it reaches the city sewer line recording the interior of the sewer line. The sewer line video does disclose if the line is clear or clogged and the condition of the sewer line. In addition to the video, a written report of the findings is provided.